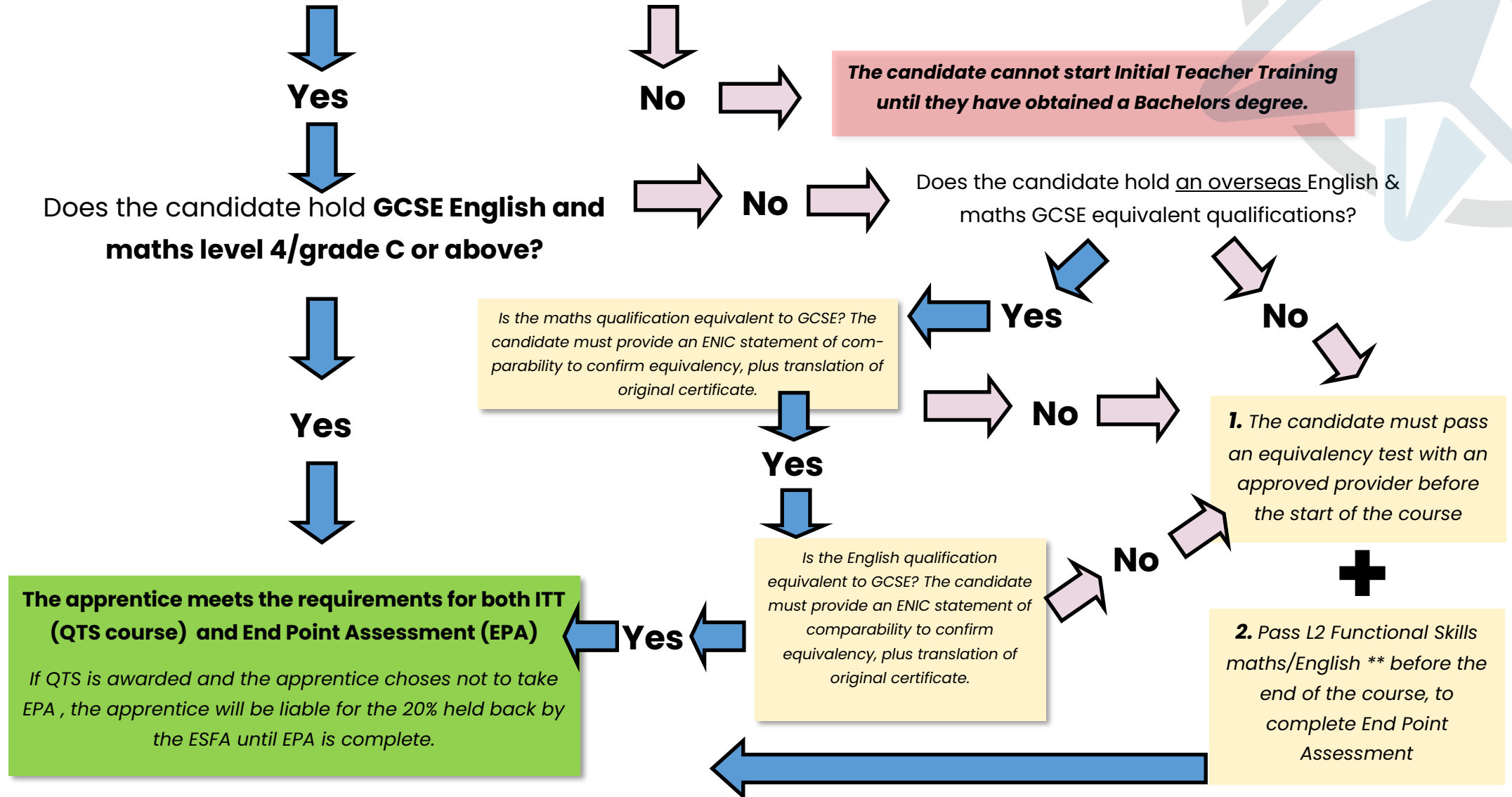


Entry criteria for Postgraduate Teaching Apprenticeship with QTS trainees

(To be eligible for Apprenticeship funding, the candidate must have been resident in the UK for 3 years prior to the start of the apprenticeship)

Does the candidate hold a Bachelors degree, or ENIC verified overseas equivalent degree*?



* All overseas qualifications must be accompanied by an ENIC statement of comparability, plus a translation of the original certificate.

**The L2 English and/or math qualification must be listed on the [ESFA approved qualification](#) for EPA list